



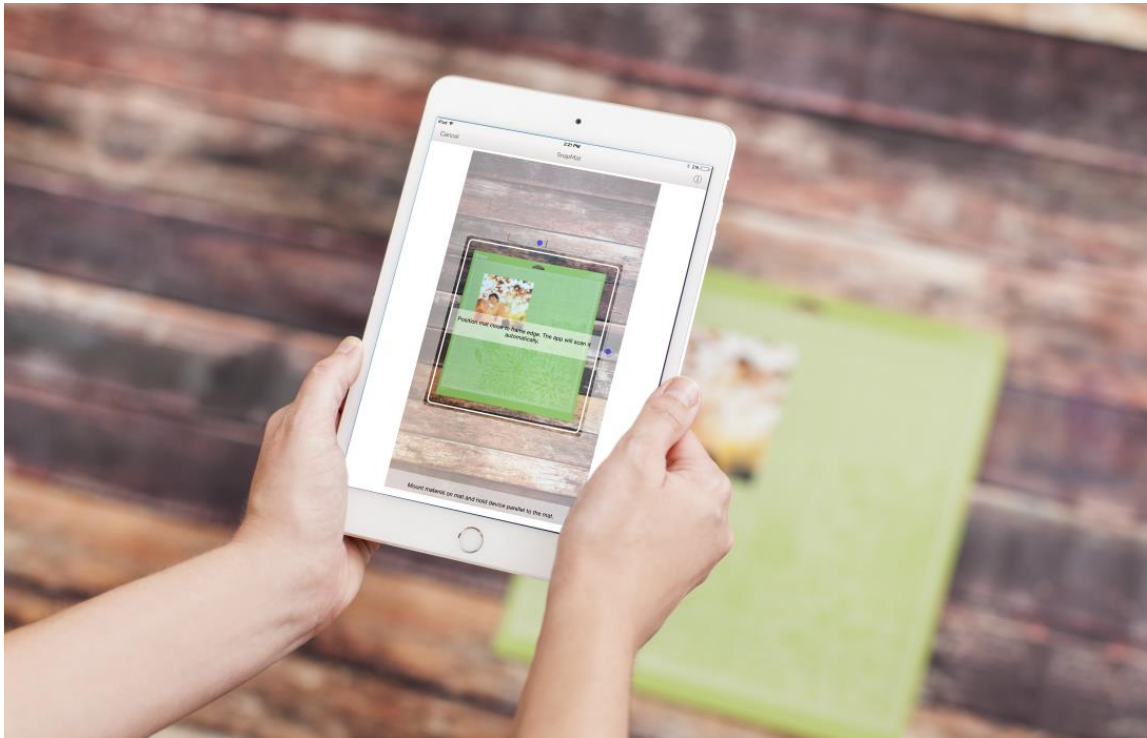
Design Space for iOS

SnapMat™

SnapMat™

A. SnapMat Overview

SnapMat captures a photo of your cutting mat to better visualize where your project will be cut or drawn on your material. With SnapMat, you can place your designs precisely on any material or item on your mat. Frame a photo with a heart or perfectly placed phrase, align an image along patterned material, and maximize valuable scrap material.



There are countless ways to use the SnapMat feature. For example..

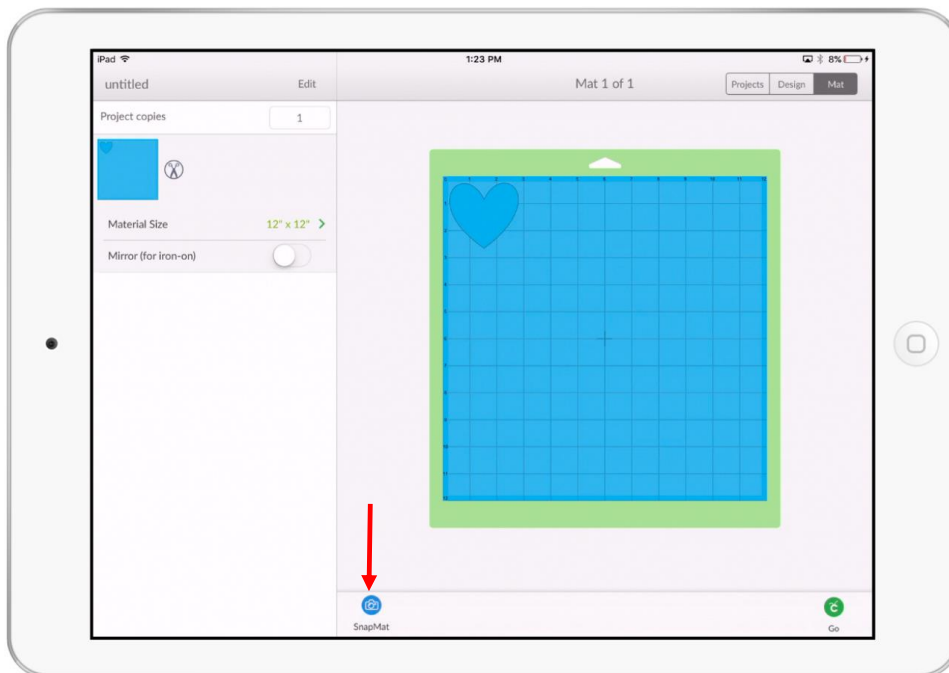
- Cut in or around specific location of photos, patterned material, stamped pages, and more
- Write in specific locations on envelopes, gift tags, greeting cards, etc.
- Use scrap materials with greater economy and confidence

When you've finished designing your project, you can use the SnapMat feature to help with image placement. Here are step-by-step instructions.

Step 1 Place your material or item on the cutting mat and lay the mat on a flat surface.

Note When snapping a photo of a 12 in. x 12 in. mat, you'll need 28 – 30 inches between the mat and your device. In many cases, it's easiest to place your mat on the floor to capture the photo.

Step 2 Tap *SnapMat* in the mat preview.



Step 3 Allow Design Space to access the camera if prompted.

Tip If access to the camera has not been granted, check your camera permissions in Settings > Privacy > Camera on your iOS device.

Step 4 Using a steady hand, hold your iOS device parallel over the mat so the outside border of the cutting mat fits in the frame on the screen. The photo will automatically be taken once the mat is detected within the frame.

Note A green rectangle will appear around the mat. Once this appears, hold the device steady and keep the camera parallel with the mat.

Tip The blue circles on the capture screen help you keep the camera parallel to the mat. Once the mat is within the frame, try aligning the blue circles in the center of each side.

Tip Ensure the edges of the mat are not curled. For best results, lay the mat completely flat.

Tip Laying your mat on a contrasting background helps the camera detect the edges of the mat.

Tip The outside edge of the mat must be visible for proper detection. Ensure that your material is not hanging over the edge of the mat.



Step 5 Once the photo has been captured, tap *Use* in the top right corner.

Step 6 Position the designs on your mat in the desired location and tap *Go* when you're ready to make your project.

Tip The *Mat Preview* screen can be zoomed in by using the pinch zoom gesture.

Tip To use *SnapMat* with a 12 in. x 24 in. mat, change the material size to 12 in. x 24 in. prior to tapping the *SnapMat* button.

Note *SnapMat* cut and draw accuracy should be within a few of millimeters of the intended location. *SnapMat* is not recommended for projects that require ultra-high precision.

Note Read our [SnapMat troubleshooting article](#) for additional assistance.

