



Make a Ceramic Coaster with Transfer Sheets

Ceramic Coaster with Transfer Sheets

What you need

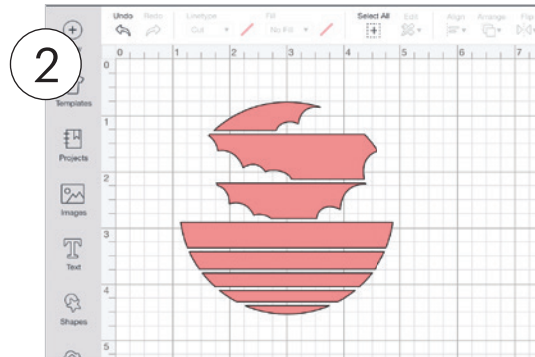
- Cricut Maker® or Cricut Explore® cutting machine
- StandardGrip Machine Mat
- Cricut EasyPress™ 2 or Cricut EasyPress*
- Cricut EasyPress Mat
- Cricut® Ceramic Coaster Blank
- Infusible Ink™ Transfer Sheet
- Cardstock (80 lb.), White (or 4 layers of butcher paper)
- Butcher paper (1)
- Lint-free cloth
- Scissors
- Tweezers
- Design Space® software on mobile device or computer

*All time and temp settings listed in these step-by-step instructions are for Cricut EasyPress 2. For original Cricut EasyPress settings, refer to our Heat Transfer Guide at cricut.com/heatguide

Cut your design

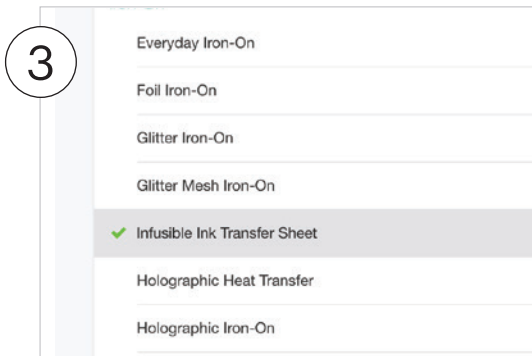


Place Infusible Ink Transfer Sheet onto StandardGrip Mat, liner side down.



In Design Space, select and size your design to fit on your coaster blank.

Note: Be sure to **Mirror** your design.



Select Browse all materials, then Infusible Ink Transfer Sheet. If using a Cricut Explore machine, turn Smart Set® Dial to **Custom** first.



Load mat and blade into machine, then press flashing **Go** button.

Weed your cut design



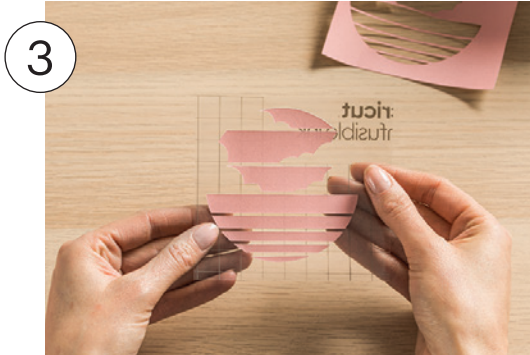
Remove cut design from mat and trim away unused area of sheet.



Gently roll cut design so cut lines separate and are more visible. "Cracking" the cut this way makes it easier to remove excess paper from in and around your design.



Use your fingers or tweezers to carefully remove the negative pieces from in and around your design, leaving design on liner.



Trim clear liner so it does not extend beyond Cricut EasyPress heat plate.

Apply your design



For this project, set your Cricut EasyPress 2 to 400°F (205°C) and 240 seconds.

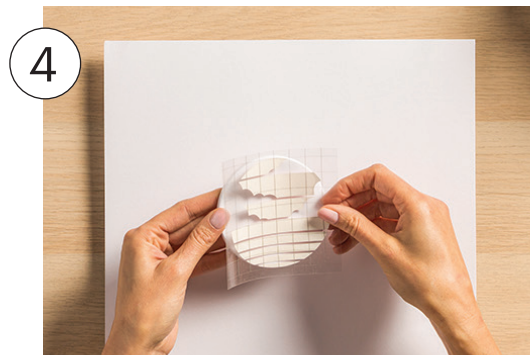
Tip: For precise temp, time, and pressure settings for your project, always refer to the Cricut EasyPress Heat Transfer Guide at cricut.com/heatguide.



Use a lint-free cloth to remove any debris from coaster.



Cover Cricut EasyPress Mat with cardstock to protect it from unwanted transfer.



Place design face-down on coaster, clear liner on top.

5



Flip coaster so bottom is facing up (top of coaster with attached design will rest against cardstock and mat).

6



Cover coaster with butcher paper.
Note: Butcher paper comes in each package of Infusible Ink Transfer Sheets.
Tip: Never reuse butcher paper for another project.

7



Press at 400°F (205°C) for 240 seconds.
Tip: If you are using a larger Cricut EasyPress, you can transfer to multiple coasters at the same time.

8



When beep sounds, slowly lift press. Try not to move the stack, including butcher paper.
CAUTION: Coaster will be very hot. Let cool completely before handling.

9



Slowly remove butcher paper, tape, and design.
Important: If design separates from liner and remains on blank, remove with tweezers. Do not remove using your fingers. This could cause an unwanted effect, like ghosting or marbling.

10



You did it! Post a photo of your finished project. **#infusibleink**

CARE: Wash with warm water and glass cleaner. Do not use steel wool, colored cleansing agents, or scrubbing pads.